

How to help?

Finances

1. Partner with us for a period to offset monthly expenses
2. Sponsor a project
3. Donate to the cause

Contributions

1. Food stuff and toiletries
2. Linens and clothing
3. Gifts for our Christmas drive

Volunteers

1. Counsellors
2. Vocational skill tutors

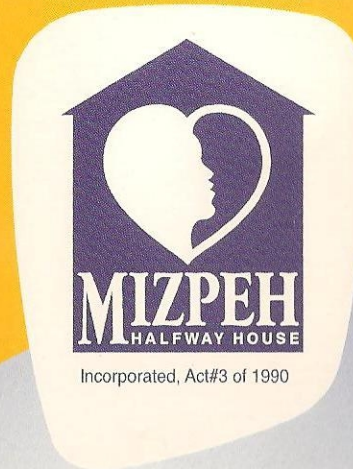
Fundraising

1. Annual dinner
2. Small business development
3. Networking

Skills

1. Administrative support
2. Graphic design and copywriting
3. Handyman and landscaping

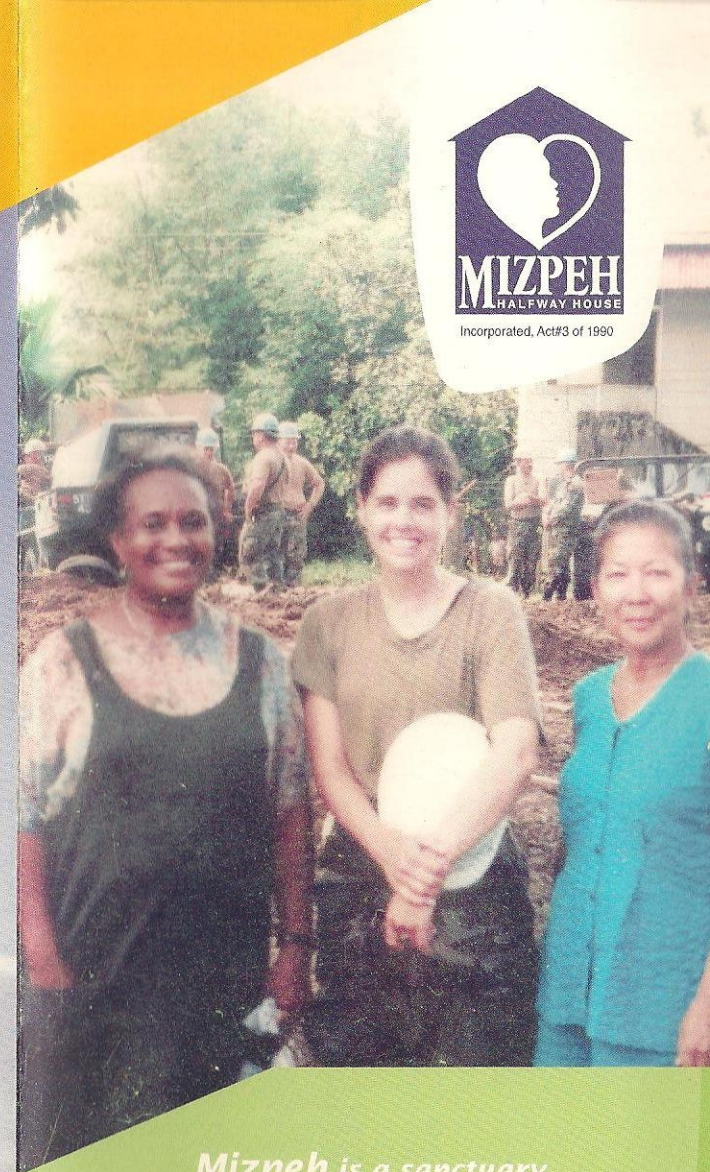
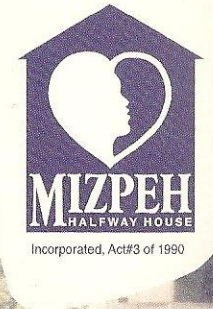
If persons would like to respond to this challenge, Mizpeh can be contacted at 13 Royal Park, Cunupia, 671-3097, 683-1133, 620-3779.



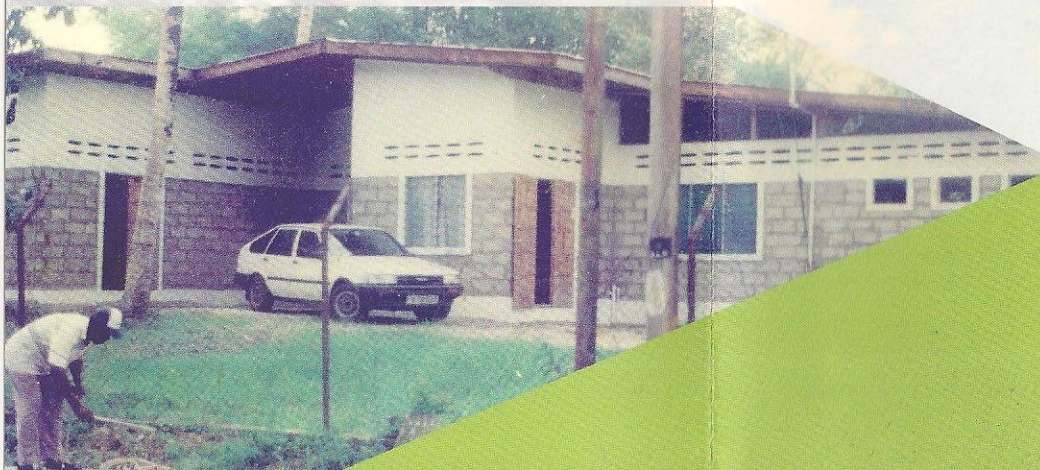
"There is much to be done in society, which needs to be addressed by people with a heart of compassion desiring to do that which is right, not for reward, but because it needs to be done.

It is hoped that many would be motivated to remove themselves from their safe places and comfort zones, and make their calling sure by coming out to be exposed, as Jesus did, in the midst."

Rev. Pearl Noriega



Mizpeh is a sanctuary for hurting women, whether battered, abused, abandoned, destitute or affected by other societal ills. As a halfway house, it seeks to provide shelter, food, clothing and a life changing programme aimed at the restoration of these hurting women, transforming them under God into functional, whole individuals.

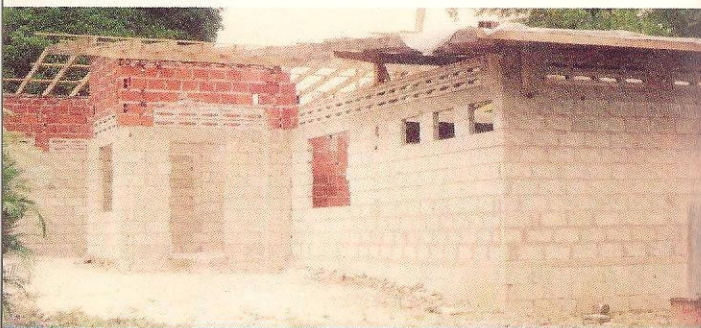


What's in a name?

The name Mizpeh is derived from the Bible, indicating a place of change – a change for the better would take place in the lives of the residents.

How did it start?

The vision for Mizpeh was birthed in the heart of Rev. Pearl Noriega in 1979. The home started operations out of rented premises, first in Toco, then Grande Riviere. In 1995 the Government of the day saw that Mizpeh was making good on its efforts to help hurting women and presented a grant of \$50,000. This was used towards the opening in February 1996 of its permanent home at Sangre Grande.



The work

As part of the work of transforming lives, Mizpeh conducts a number of programmes.

1. **Counselling:** Provides comfort, re-education and therapy for hurting women.
2. **Skill development:** Furnishes residents with useful skills so they can be self-sufficient.
3. **Rehabilitation:** Aims at restoring the families as far as possible.
4. **Counsellor training:** Equips members to provide the specific care to be given.

Extensions

Mizpeh has facilities to cater for women with their children. It also offers support to expectant mothers to enable them to make positive decisions concerning their unborn child. It does not however, have the facilities to cater for the drug addicted or the mentally challenged. And it should be clarified that Mizpeh is not a home for "church people." Mizpeh is open to society and no one is turned away.

Facilities

The halfway house has six bedrooms and is equipped with a kitchen, pantry, dining, washroom and recreation areas, caregiver's quarters, office and chapel. A building extension hosts the skill training facilities, outfitted with a library, sewing machines, kitchen and washroom areas. The home can hold up to 15 residents. The staff required includes caregiver/cooks who operate on a shift basis, an administrator and secretary/bookkeeper.

Structure

Mizpeh is led by a Board of Directors comprising five members who are appointed for one or two year terms. Over the years the Board has included professionals, businessmen and clergy. Mizpeh's financial statements are audited and are available to its contributors for perusal.

Resourceful

Mizpeh operates with the work of volunteers, fundraisers and some financial support from well-wishers. Over the years Mizpeh has been kept afloat by the dedicated:

- Tuck shop at Citibank
- Winfall thrift shop
- Tea in a Jiffy
- Recitals at Queens's Hall
- Dinner at Hyatt Regency *New!*



Achievements

- Mizpeh can be found in Trinidad and Tobago's law books. For its cause, Mizpeh felt it was not enough to be incorporated under the Companies Act. It went further to seek the sanction of Parliament. Both Houses of Parliament endorsed its operation by enacting legislation to guide the conduct of its affairs, identified as Act No. 3 of 1990.
- Mizpeh is recognised as a voice to be heeded. The organisers of national consultations on gender, community, empowerment of women, abuse and domestic violence, have embraced Mizpeh.
- Mizpeh was the recipient of the Oklahoma Army National Guard Civilian project. They built and furnished the extension to the home, which houses the skill training facilities. Foreign governments have also seen it fit to bestow various grants on Mizpeh.

Success

Over the years, Mizpeh has seen transformation in the lives of incest cases, abused women, young mothers involved in custody battles, rape victims, young prostitutes in search of a new life. Some have stayed in touch to keep Rev. Noriega abreast of their growth and new developments in their lives.